

PANASONIC PhotoMos Relays

Panasonic PhotoMOS™ relays offer high reliability with stable performance. Fast switching speed, low capacitance and small package size ensure that PhotoMOS relays meet the requirements of high performance switching applications, such as ATE, Instrumentation and Medical equipment.



This page of product is RoHS compliant.

AQV22 SERIES

- High frequency characteristics with low capacitance between output terminals
- High sensitivity, high speed response
- Low-level off state leakage current
- Controls low-level analog signals
- Low-level thermal electromotive force (Approx. 1 μ V)
- Small LED voltage drop on input side (Max. 1.5V)

For quantities greater than listed, call for quote.

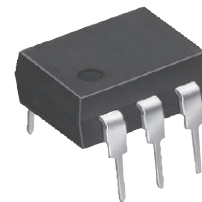
MOUSER STOCK NO.	Panasonic Part No.	Package Style	Current Rating (mA)	Max. Load Voltage (V)	Contact Arrangement	Price Each			
						1	10	100	500
Through-Hole Type									
769-AQV221	AQV221	DIP-6	80	40	1 Form A	5.71	4.66	3.97	3.50
SMD Type									
769-AQV221A	AQV221A	SMD-6	80	40	1 Form A	5.71	4.66	3.97	3.50
769-AQV225A	AQV225A	SMD-6	120	80	1 Form A	5.71	4.66	3.97	3.50

AQV25 SERIES

- High sensitivity, low ON resistance
- Optical coupling for extremely high isolation
- Low-level thermal electromotive force (Approx. 1 μ V)
- Low-level off state leakage current

For quantities greater than listed, call for quote.

MOUSER STOCK NO.	Panasonic Part No.	Package Style	Current Rating (mA)	Max. Load Voltage (V)	Contact Arrangement	Price Each			
						1	10	100	500
Through-Hole Type									
769-AQV251	AQV251	DIP-6	500	40	1 Form A	6.44	5.92	4.48	3.95
769-AQV252	AQV252	DIP-6	400	60	1 Form A	6.44	5.92	4.48	3.95
769-AQV253	AQV253	DIP-6	200	250	1 Form A	6.44	5.92	4.48	3.95
769-AQV254	AQV254	DIP-6	150	400	1 Form A	6.44	5.92	4.48	3.95
769-AQV257	AQV257	DIP-6	250	200	1 Form A	6.44	5.92	4.48	3.95
769-AQV258	AQV258	DIP-6	20	1500	1 Form A	7.25	6.66	5.04	4.44
769-AQV259	AQV259	DIP-6	30	1000	1 Form A	7.55	6.93	5.24	4.62
769-AQV253H	AQV253H	DIP-6	200	250	1 Form A	6.84	6.28	4.75	4.19
769-AQV254H	AQV254H	DIP-6	150	400	1 Form A	6.84	6.28	4.75	4.19
SMD Type									
769-AQV251A	AQV251A	SMD-6	500	40	1 Form A	6.44	5.92	4.48	3.95
769-AQV252A	AQV252A	SMD-6	400	60	1 Form A	6.44	5.92	4.48	3.95
769-AQV257A	AQV257A	SMD-6	250	200	1 Form A	6.44	5.92	4.48	3.95
769-AQV254A	AQV254A	SMD-6	150	400	1 Form A	6.44	5.92	4.48	3.95
769-AQV258A	AQV258A	SMD-6	20	1500	1 Form A	7.25	6.66	5.04	4.44
769-AQV259A	AQV259A	SMD-6	30	1000	1 Form A	7.55	6.93	5.24	4.62



DIP-6

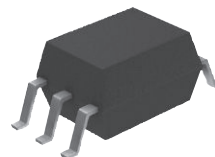
AQV252G SERIES

- Greatly improved specs allow you to use this in place of mercury and mechanical relays.
- Greatly increased load current in the same package size



For quantities greater than listed, call for quote.

MOUSER STOCK NO.	Panasonic Part No.	Package Style	Current Rating (mA)	Max. Load Voltage (V)	Contact Arrangement	Price Each			
						1	10	100	500
Through-Hole Type									
769-AQV252G	AQV252G	DIP-6	2500	60	1 Form A	6.44	5.92	4.48	3.95
SMD/SMT Type									
769-AQV252GA	AQV252GA	SMD-6	2500	60	1 Form A	6.44	5.92	4.48	3.95
769-AQV252G2S	AQV252G2S	SOP-6	3	50	1 Form A (SPST-NO)	11.49	9.38	7.82	6.90



SOP-6

AQV414 SERIES

- Controls low-level analog signals
- High sensitivity, low ON resistance

For quantities greater than listed, call for quote.

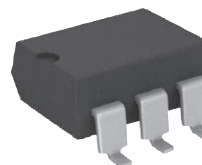
MOUSER STOCK NO.	Panasonic Part No.	Package Style	Current Rating (mA)	Max. Load Voltage (V)	Contact Arrangement	Price Each			
						1	10	100	500
Through-Hole Type									
769-AQV414	AQV414	DIP-6	120	400	1 Form B	5.66	4.62	3.93	3.47
SMD Type									
769-AQV414A	AQV414A	SMD-6	120	400	1 Form B	5.65	4.62	3.92	3.46

AQV414 E AND EH SERIES

- High sensitivity, low ON resistance
- Reinforced insulation 5,000 V type
- Low-level off-state leakage current

For quantities greater than listed, call for quote.

MOUSER STOCK NO.	Panasonic Part No.	Package Style	Current Rating (mA)	Max. Load Voltage (V)	Contact Arrangement	Price Each			
						1	10	100	500
Through-Hole Type									
769-AQV414E	AQV414E	DIP-6	120	400	1 Form B	5.07	4.14	3.52	3.11
769-AQV414EH	AQV414EH	DIP-6	120	400	1 Form B	5.54	4.53	3.77	3.33
SMD Type									
769-AQV414EHA	AQV414EHA	SMD-6	120	400	1 Form B	5.44	4.44	3.78	3.33



SMT-6

AQV234 SERIES

- High sensitivity type
- Low-level off state leakage current
- Stable ON resistance
- Low-level thermal electromotive force (Approx. 1 μ V)
- Extremely low closed-circuit offset voltages to enable control of small analog signals without distortion

For quantities greater than listed, call for quote.

MOUSER STOCK NO.	Panasonic Part No.	Package Style	Current Rating (mA)	Max. Load Voltage (V)	Contact Arrangement	Price Each			
						1	10	100	500
Through-Hole Type									
769-AQV234	AQV234	DIP-6	120	400	1 Form A	6.59	6.06	4.58	4.04
SMD Type									
769-AQV234A	AQV234A	SMD-6	120	400	1 Form A	6.59	6.06	4.58	4.04